

STUB OUT BRACKET

➤➤ 525-P2M

LockBlock Face Plate™

SPECIFICATION

Sioux Chief's LockBlock Face Plate™ is designed support 1/2" or 3/4" CTS tube when penetrating a wall or floor. The plate is used in conjunction with either the LockBlock or PEX Bend Support compression devices from Sioux Chief. Compression devices shall be compatible with copper, PEX or CPVC tube. The face plate shall be made from 20-gauge, corrosion resistant galvanized steel. Design shall include alternating holes around the perimeter of the plate allowing installer to use self-tapping screws when securing to metal stud or metal bracket. Design shall include a formed rib to provide additional strength once plate is mounted. The face plate shall include a large center hole that allows CTS tube to pass through the hole and penetrate the wall or floor. Minimally, there shall be two smaller holes, and 2 oblong holes located near the large center hole, that align with and are used to secure either LockBlock or PEX Bend Support compression devices. Screws pass through the face plate and penetrate into plastic compression device on the backside of plate. The LockBlock Face Plate may be used in new construction or retrofit/re-piping jobs. Shall be IAPMO certified.

INSTALLATION

Using two #6 x 1" coarse thread, corrosion resistant screws (provided with compression devices), loosely mount the LockBlock or PEX Bend Support compression devices to back side of the plate. Using at least two additional common screws or nails (not provided), secure the face plate to vertical stud, wood sub floor or pre-existing horizontal brace located between the vertical studs. Insert 1/2" or 3/4" CTS tube into the back of the LockBlock, penetrating through the center hole of the plate. If using the PEX Bend Support, insert 1/2" PEX tubing through the back of the blocks penetrating through the center hole of the plate. Bend the PEX tubing until it locks into the end of the plastic elbow. Securely tighten the screws penetrating through the front of the plate and through the plastic LockBlock or PEX Bend Support to complete installation.

MATERIALS

20-gauge galvanized steel

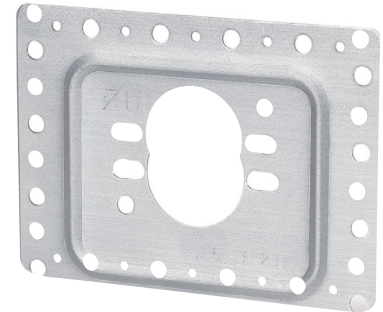
SAFE WORKING LOAD

25 lbs.

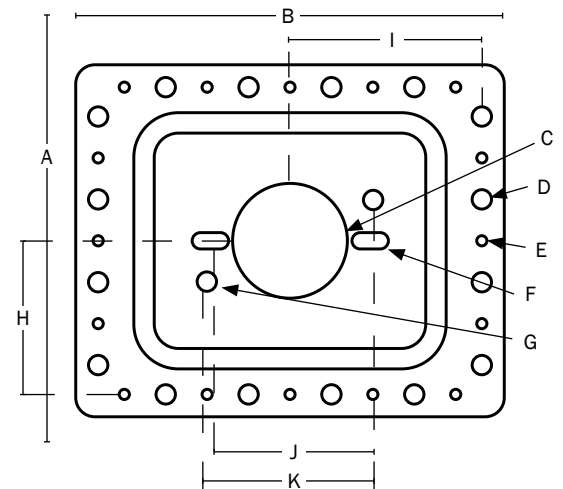
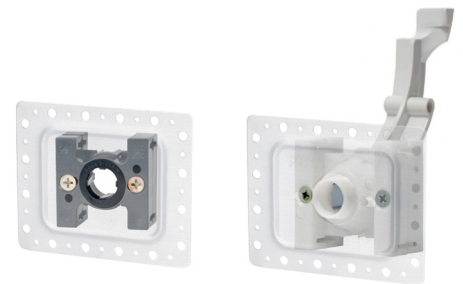
DIMENSIONS

A:	Height	3.450"
B:	Width	4.200"
C:	Center hole	1.125" diameter
D:	Large outer hole	0.190" diameter
E:	Small outer hole	0.100" diameter
F:	LockBlock mounting hole	0.160" diameter
G:	PBS mounting hole	0.190" diameter
H:	Center hole to horizontal outer hole distance	1.505" on-center
I:	Center hole to vertical outer hole distance	1.880" on-center
J:	LockBlock mounting hole distance	1.5795" on-center
K:	PBS mounting hole distance	1.630" on-center

ITEM # SUBMITTED	_____
JOB NAME	_____
LOCATION	_____
ENGINEER	_____
CONTRACTOR	_____
PO#	_____ TAG _____



525-P2M



Made in USA

Item Number

525-P2M