

POSITIONING BRACKET

»» 521-110

SPECIFICATION

Sioux Chief 521-110 Commercial Positioning bracket shall be used where necessary to support either 1/2" or 3/4" copper tube in chase applications for fixture stub outs or when necessary to support supply lines vertically. Bracket shall mount directly to the horizontal waste or vertical waste/vent pipe using a stainless steel band (provided). Bracket shall include 1/2" holes to position copper stub outs on either 8" or 4" center lines. Bracket shall include 1/2" notches to support copper pipe vertically on a 4" center line. Bracket shall include 3/4" notches to support copper pipe vertically on an 8" center line. Bracket shall include four 1 1/32" holes to receive isolating PipeEye™ grommets (purchased separately) to support 1/2", 3/4" or 1" CTS tube when desired. Bracket can be used to secure stub outs on island sinks when stud walls are not present.

INSTALLATION

Secure bracket to waste or vent pipe using stainless steel band (provided). Insert copper tube into desired holes or notches. Solder copper tube to bracket. When soldering heat tube, not bracket.

When using plastic PipeEye™ grommets, secure bracket to waste or vent pipe using stainless steel band (provided). Insert tube into 1 1/32" holes. Position grommet around tube then push grommet into hole until tabs on backside of grommet engage the bracket.

Note: Please request separate spec sheet for PipeEye™ grommets.

MATERIALS

Bracket: 18-gauge copper-plated steel

Band: 5" max diameter, 300 series stainless steel, 1/2" wide x 0.025" thick, 410 series slotted/hex head screw

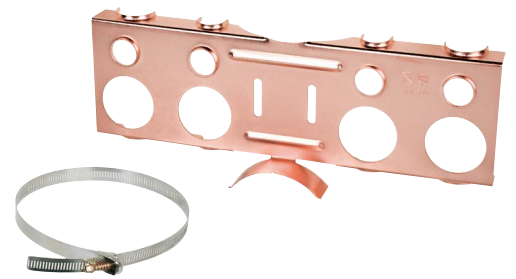
SAFE WORKING LOAD

25 lbs.

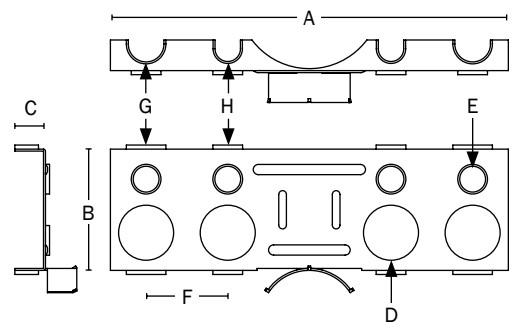
DIMENSIONS

A: Width	9.75"
B: Height	2.875"
C: Depth	0.75"
D: Large holes	1.348" diameter
E: Small holes	0.632" diameter
F: Hole/notch spacing	2" on center
G: Outer notches	0.87" diameter
H: Inner notches	0.62" diameter

ITEM # SUBMITTED	_____
JOB NAME	_____
LOCATION	_____
ENGINEER	_____
CONTRACTOR	_____
PO#	_____ TAG _____



521-110



Made in China

Item Number

521-110