

PLASTIC P-TRAP - THREADED ADAPTER

»» 230 SERIES

SPECIFICATION

Sioux Chief 230 Series P-Traps shall be installed where necessary in plumbing systems. Trap shall provide a liquid seal that prevents the back passage of gas without affecting the flow of sewage or wastewater through the system when installed in a properly vented DWV system. Trap shall include nuts, washers and trap adapter. IAPMO Listed. Designed in accordance with ASTM F409-12.

MATERIALS

Tubular/Nuts: Polypropylene

Washers: Polyethylene, soft TPV

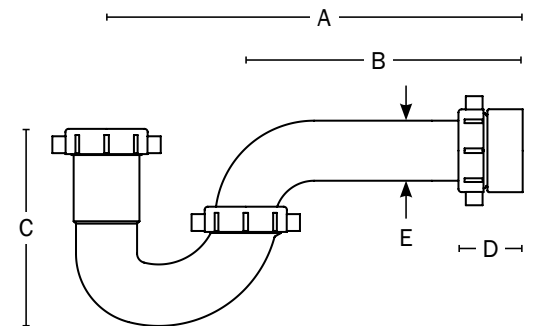
Trap Adapter: PVC, ABS

DIMENSIONS

A: Overall length	11¼"
B: Wall bend length	7½"
C: Height	5"
D: Trap adapter length	1¾"
E: Width	1½"

Dimensions are approximate and provided for reference only

ITEM # SUBMITTED	_____
JOB NAME	_____
LOCATION	_____
ENGINEER	_____
CONTRACTOR	_____
PO#	_____ TAG _____



Create Item Number

230-AB

e.g. **230-0206101:** 1½" White P-trap with threaded PVC adapter, 1/bag

COLOR/ADAPTER A

- 0206** = P-Trap (white) with threaded PVC trap adapter
- 0316** = P-Trap (black) with threaded ABS trap adapter
- 0706** = Reversible P-Trap (white) with threaded PVC trap adapter
- 0716** = Reversible P-Trap (black) with threaded ABS trap adapter
- 0806** = Reversible P-Trap (white) with threaded ABS trap adapter

WASHERS B

- 101** = Polyethylene (standard) washers
- 201** = Soft TPV washers