

# ProPlate™

Single-Valve Outlet Plate



## Savings

Fewer touches – Installs at rough, and incorporates valve, escutcheon, stub out, and bracket in one easy-to-install product.

No more managing/buying/storing/organizing/carrying/handling separate parts and pieces – Saves time with every installation.

## Quality

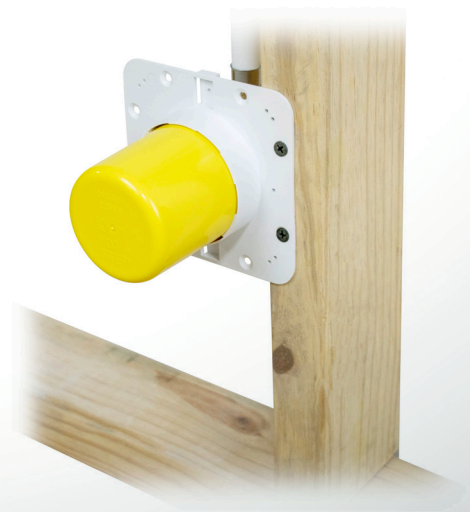
No wobbly stub outs, exposed tube/joints or inferior valves. Installations are consistent – solid, clean, and professional-looking.

Attractive, plated valves are certified and compliant.

## Convenient

Valves are replaceable with standard 5/8" OD compression stops.

Debris cover (included) protects valve during rough-in.



Supply

Drainage

Support

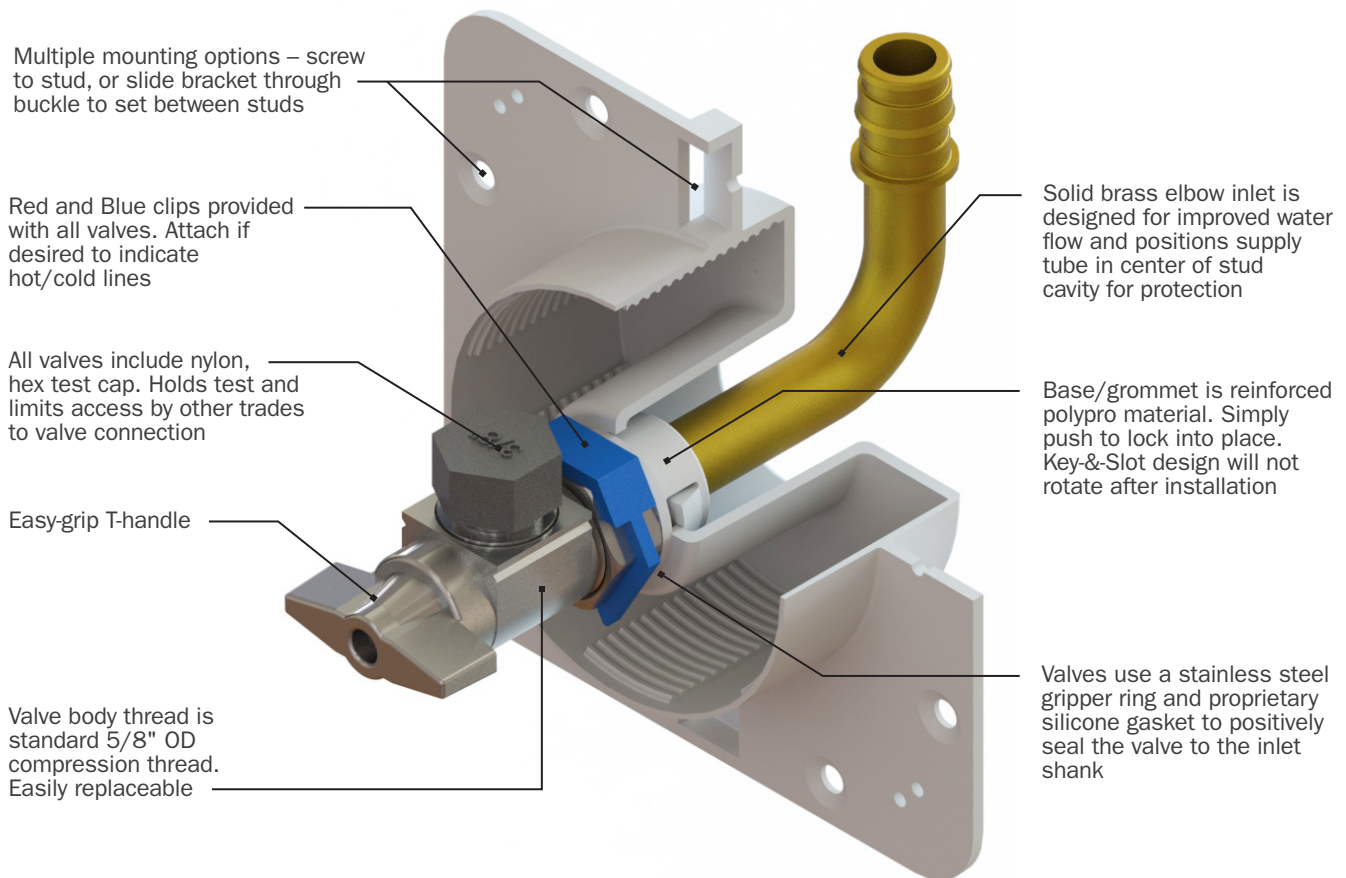
Specialties

[www.siouxchief.com](http://www.siouxchief.com)

TAKE THE FIELD.



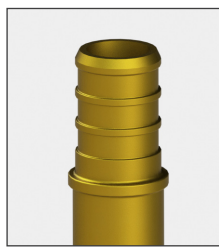
# Patented Valve Design Exclusive to Sioux Chief Access products.



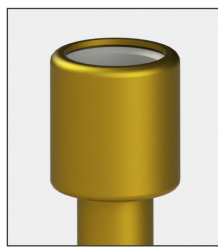
## Connection Types:



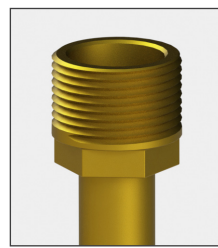
ASTM F1960 Grip™



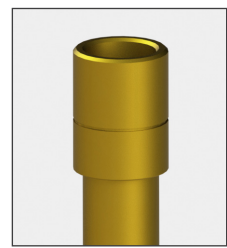
ASTM F1807 Crimp™



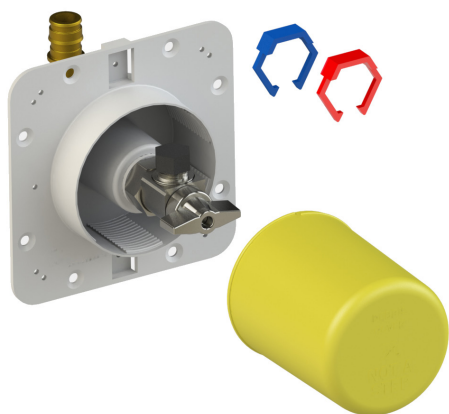
CPVC Socket



MIP/F.SWT



M.SWT/Push/Press with push-fitting lock groove



### Complete Rough-In Package

The ProPlate™ includes everything you need, when you need it: a versatile mounting/access plate, high-quality valve with brass elbow connection, protective debris cover, and color clips for hot/cold lines.

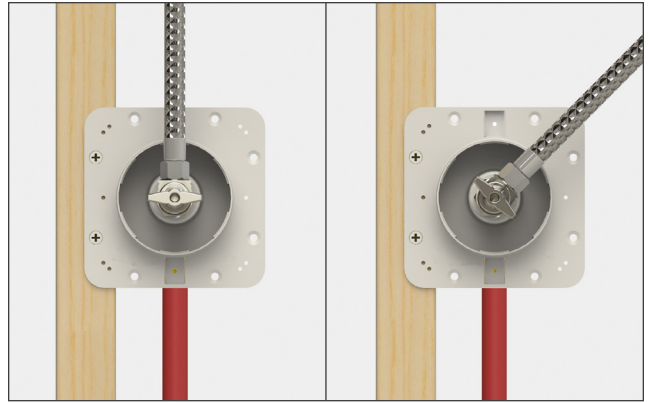
Finish escutcheons are available separately





**Fast, Consistent Rough-ins**

Quickly and easily rough in for lavatories, toilets, dishwashers, ice makers, or other appliances. Supply lines can be run from above or below.



**Swivel Valve Outlet**

Valve outlet can be oriented in any direction, independent of the inlet elbow and incoming supply tube.



**Works Inside Cabinets**

Escutcheons are designed to thread onto the plate and hold securely – Perfect for interior walls or inside of cabinet-style lavatory fixtures.



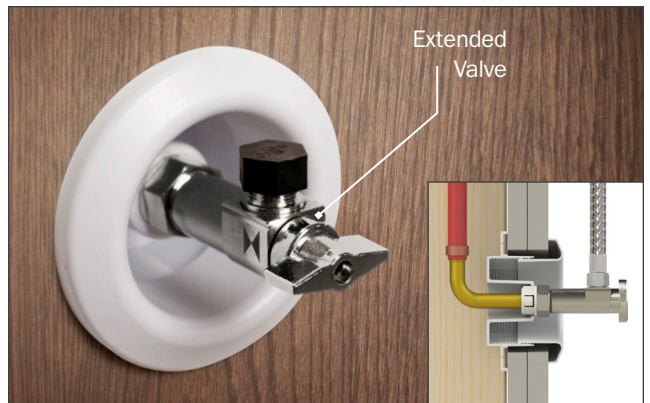
**Professional-Looking Finish**

Pre-colored, white ABS escutcheons can be painted to match any wall color. Install the TrimTite™ for a more flush appearance



**Mounts On or Between Studs**

Fasten the ProPlate™ directly to studs, or use a bracket to mount between studs. Chrome-plated escutcheons compliment the look of the plated valve.



**Optional Extended Valve**

The extended 3/8" outlet valve option is great for applications where multiple layers of drywall are used, or when cabinets are furred out from the wall.



### MiniRester™ Option

For applications that require a water hammer arrester, the compression thread MiniRester™ can be connected directly to the outlet of the ProPlate™ valve when installing supply tubes.

Item #  
660-GTROB  
or 660-GTR1B



### Replaceable Valve Design

All ProPlate™ valves can be replaced with any standard 5/8" OD compression-thread valve.  
(see website for valve replacement instructions)



699-A1-XR



699RA1-XR

**Fire-Rated**



699RF



699FC

### Buying Information

1/4" COMP. OUTLET ITEM NO.	3/8" COMP. OUTLET ITEM NO.	3/8" EXTENDED COMP. OUTLET ITEM NO.	3/4" M.HOSE OUTLET ITEM NO.	INLET CONNECTION	MIN. QTY.	CASE QTY.
<b>PROPLATE™</b>						
699-A0-CR	699-A1-CR	699-A1ECR	699-A3-CR	1/2" CPVC socket connection	10	10
699-A0-MR	699-A1-MR	699-A1EMR	699-A3-MR	1/2" MIP/F.Swt connection	10	10
699-A0-PR	699-A1-PR	699-A1EPR	699-A3-PR	1/2" M.Swt/Press/Push connection	10	10
699-A0-WR	699-A1-WR	699-A1EWR	699-A3-WR	1/2" F1960 PEX connection	10	10
699-A0-XR	699-A1-XR	699-A1EXR	699-A3-XR	1/2" F1807 PEX connection	10	10
<b>FIRE-RATED PROPLATE™</b>						
699RA0-CR	699RA1-CR	699RA1ECR	699RA3-CR	1/2" CPVC socket connection	30	30
699RA0-MR	699RA1-MR	699RA1EMR	699RA3-MR	1/2" MIP/F.Swt connection	30	30
699RA0-PR	699RA1-PR	699RA1EPR	699RA3-PR	1/2" M.Swt/Press/Push connection	30	30
699RA0-WR	699RA1-WR	699RA1EWR	699RA3-WR	1/2" F1960 PEX connection	30	30
699RA0-XR	699RA1-XR	699RA1EXR	699RA3-XR	1/2" F1807 PEX connection	30	30
<b>ACCESSORIES</b>						
699RF	White escutcheon for ProPlate™ - paintable, fire-rated ABS				10	10
699FC	Chrome-plated escutcheon for ProPlate™ - fire-rated ABS				10	10
699-DC	Debris cover for ProPlate™				10	10
698-VC	Color clips for valve - red/blue				50	50
688-G1CE	Extended replacement valve - 5/8" OD comp. thread x 3/8" OD comp. outlet				1	10
525-20	Galvanized support bracket with holes- 5/8" x 20" long				100	100
305-RT	Grommet removal tool - use to remove valve from base plate				1	10



www.siouxchief.com

14940 Thunderbird Road  
Kansas City, MO 64147  
P 1.800.821.3944  
F 1.800.758.5950

