

# SmartSpout™

▶▶ Replacement Tub Spout for 1/2" Copper Tube

PATENT #7,373,674



## Secure Connection

Tightens firm and flush to the finished wall.

## Clean Finish

No need to caulk around the spout after installation.

## Quick Install

Easily slips over copper tube. Optional extension available.

## Reduces Moisture

Free DrySeal™ Pipe Collar reduces moisture in wall cavity and helps prevent mold.

Supply

Drainage

Support

Specialties

[www.siouxchief.com](http://www.siouxchief.com)

TAKE THE FIELD.



# Features & Benefits

## Secure Connection

The SmartSpout™ is the last replacement spout you'll ever buy. Uniquely designed and patented, the SmartSpout actually pulls itself towards the wall providing a firm and secure installation. The body of the spout is made from heavy, die-cast zinc material and the internal clamping mechanism and spring are made from corrosion-resistant Type 304 stainless steel. SmartSpout is designed to work only when ½" copper tube penetrates through the wall.

## Reduces Moisture

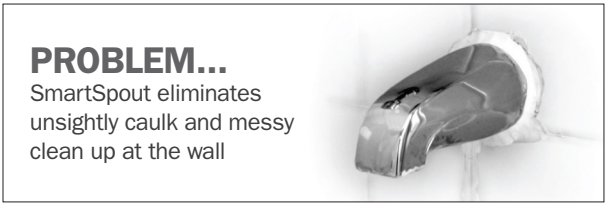
Each spout includes a free, self-adhesive DrySeal™ Pipe Collar. This plastic disc is sized to fit tightly over the copper tube and is tapered to direct water away from the open hole.

## Clean Finish

Available in three finishes with or without a shower diverter, the SmartSpout is designed to pull itself towards the wall and therefore eliminates the need for unsightly caulk required with other brands.

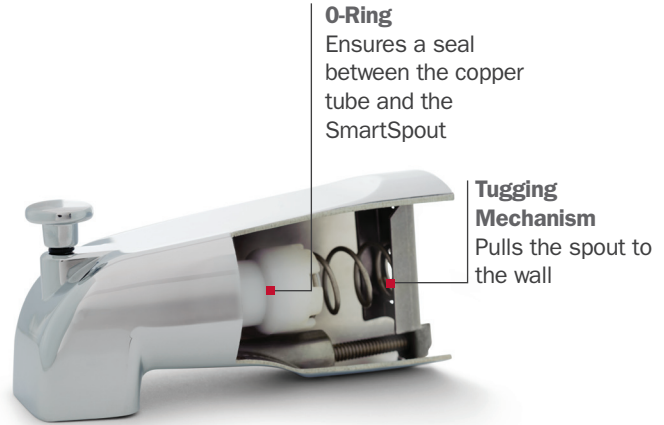
## Quick Install

Remove the old spout. Make sure the copper tube penetrating through the wall is at least 2 5/8" long. Clean the copper then push the SmartSpout over the tube and tighten. It's that easy.



### PROBLEM...

SmartSpout eliminates unsightly caulk and messy clean up at the wall



### O-Ring

Ensures a seal between the copper tube and the SmartSpout

### Tugging Mechanism

Pulls the spout to the wall

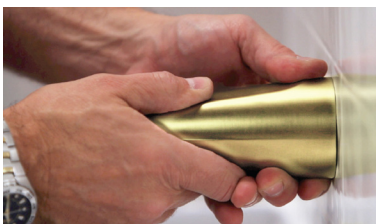
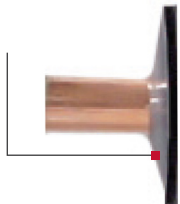


### DrySeal Pipe Collar

With self-adhesive foam backing

### Mounts Flush

Tapered disc directs water away from the open hole



**1.** Remove old spout; clean the copper tube to remove burrs; clean the wall surface around the spout.



**2.** Mark the copper stub out even with the hash mark on the underside of the SmartSpout and cut off excess pipe.



**3.** Thoroughly clean inside and outside of copper tube to remove all burrs.



**4.** Remove backing strip on DrySeal Pipe Collar. Push DrySeal Pipe Collar over tube and apply firmly to wall. Push the SmartSpout onto the tube, and against the wall.



**5.** Tighten the screw to secure the SmartSpout snug to the wall. Do NOT over tighten as the wall could become damaged.



**6.** Check for tightness and turn screw until desired amount of rigidity is achieved. Turn on valve and check for leaks.

# Available Copper Extension Kit

## Quick Install

If the copper stub out penetrating through the wall is too short once the old spout is removed, extend the copper tube length using the copper extension nipple. This copper extension fits inside the 1/2" copper stub out. The copper extension can be soldered. If soldering is not an option, it can be glued in place with the specially formulated copper-to-copper, 2-step epoxy provided. Substituting the epoxy provided in the kit voids our warranty.



### SmartSpout™

Installs on 1/2" copper tube only



### Copper Extension Kit

Includes copper extension nipple, sand cloth, epoxy and applicator stick



### Tools Needed

Pencil, hacksaw and screwdriver



**1.** Remove old spout; clean the copper tube to remove burrs; clean the wall surface around the spout.



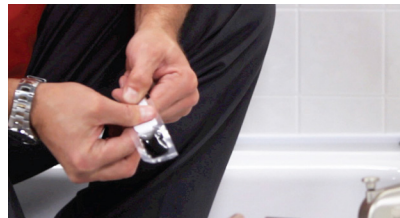
**2.** Remove any old fittings with hacksaw, making sure to leave at least a 1 1/4" length of copper tube exiting the wall.



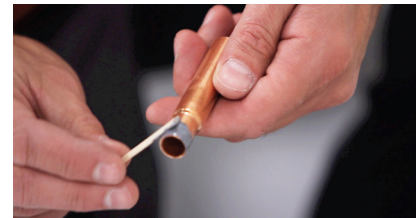
**3.** Thoroughly clean inside and outside of copper tube to remove all burrs.



**4.** Dry fit copper extension to make sure it fully slips into copper tube in wall.



**5.** Squeeze one side of epoxy pouch to burst the middle seal. Work epoxy to other side and mix thoroughly until gray color appears.



**6.** Working quickly, apply epoxy completely to outside of reduced end of copper extension.



**7.** Apply epoxy completely to inside of tube in wall.



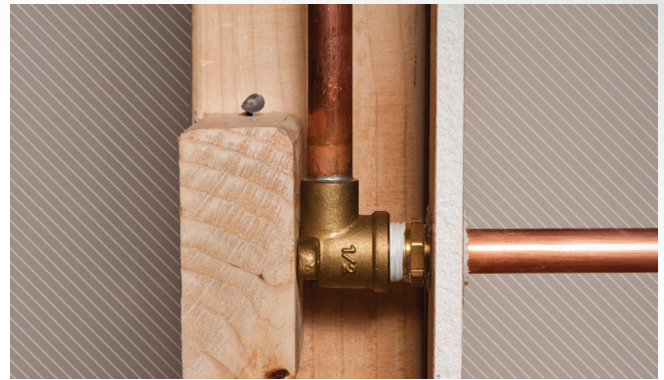
**8.** Insert copper extension into tube in wall and wipe away excess epoxy on exterior of tube.



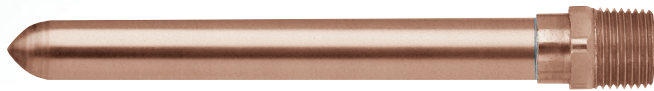
**9.** Measure length using hash mark and proceed with SmartSpout installation on page 1, step 2.

## Installation Tip

In instances where a threaded nipple is discovered after the old spout is removed, Sioux Chief offers the 614-8L threaded MIP Bullet™ (sold separately) which allows you to stub out with a ½" copper tube and then use the SmartSpout.



614-8L



Install 614-8L threaded MIP Bullet (sold separately) into drop eared elbow to bring copper tube outside the finished wall prior to installing the SmartSpout.



972-32



972-36



972-36RB



972-36SN



972-3RAKIT



972-321PK2

### »» Buying Information

ITEM NO.	DESCRIPTION	U/M	MIN. QTY.	CASE QTY.
<b>SmartSpout</b>				
972-32	Without Diverter, Chrome	EA	1	18
972-32RB	Without Diverter, Oil Rubbed Bronze	EA	1	18
972-32SN	Without Diverter, Satin Nickel	EA	1	18
972-36	With Diverter, Chrome	EA	1	18
972-36RB	With Diverter, Oil Rubbed Bronze	EA	1	18
972-36SN	With Diverter, Satin Nickel	EA	1	18
<b>SmartSpout with Copper Extension Kit</b>				
972-361PK2	With Diverter & Copper Extension Kit, Chrome, Clamshell Package	EA	1	6
972-362PK2	With Diverter & Copper Extension Kit, Satin Nickel, Clamshell Package	EA	1	6
972-363PK2	With Diverter & Copper Extension Kit, Oil Rubbed Bronze, Clamshell Package	EA	1	6
<b>Copper Extension Kit</b>				
972-3RA	½" Copper Extension Only, 5/Bag	BG	1	10
972-3RAKIT	½" Copper Extension Kit, 1/Bag	BG	1	10
614-8L	½" CTS × 8" L MIP Bullet	EA	50	50

**NOTE:** Every SmartSpout includes a free DrySeal™ Pipe Collar and installation instructions.