

# HydroTec™

## Maxi Trench Drain System

### Heavy-Duty

Suitable for a variety of applications, with Load Class up to F900

Fiber-reinforced concrete channels with integral, ductile iron edge rails

Concrete strength C35/45

Highly stable – installs with no fasteners or joint hardware needed

### Unique Features

Grates available with bolt-less locking feature, or F1 locking option

Maxi 300/400 systems include polymer grate inserts to reduce noise and wear on castings

Weather-resistant, non-flammable, eco-friendly



Supply

Drainage

Support

Specialties

[www.siouxchief.com](http://www.siouxchief.com)

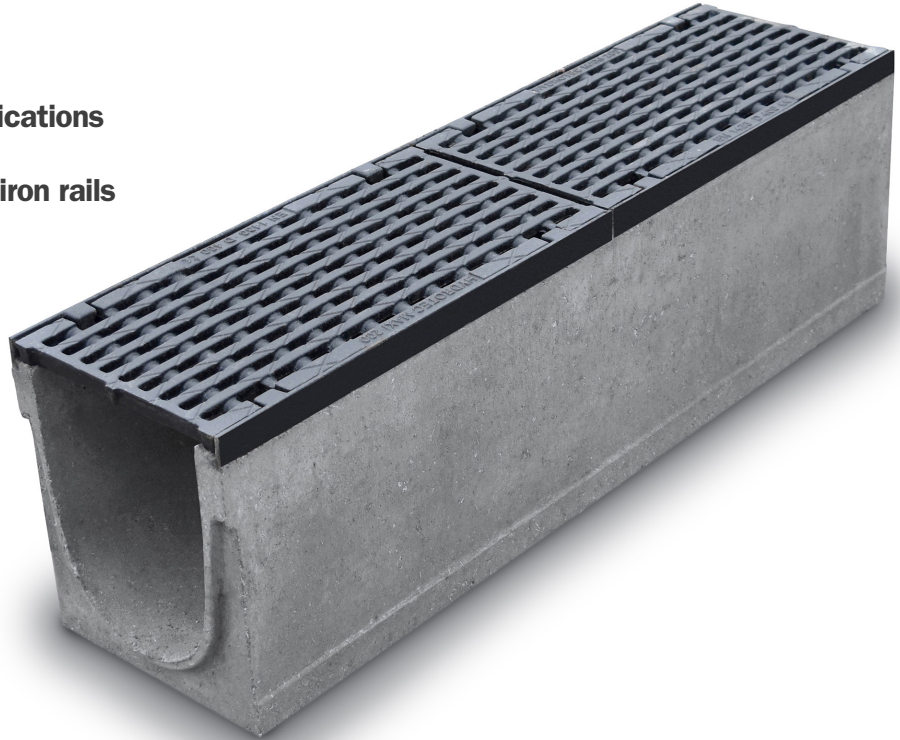
TAKE THE FIELD.



# HydroTec™

## » Maxi System Features

- Perfect for a wide variety of applications
- Concrete channels with integral iron rails
- No joint hardware needed
- Bolt-less grate locking
- Weather-resistant



### Engineered to Last

Trench drain systems in heavy-load applications must meet the highest level of safety and performance. This requires careful installation and substantial concrete encasement. Damage caused by dynamic horizontal forces is the most common cause of trench drain channel failure. The robust HydroTec™ Maxi system meets these challenges, up to and including Class F900.



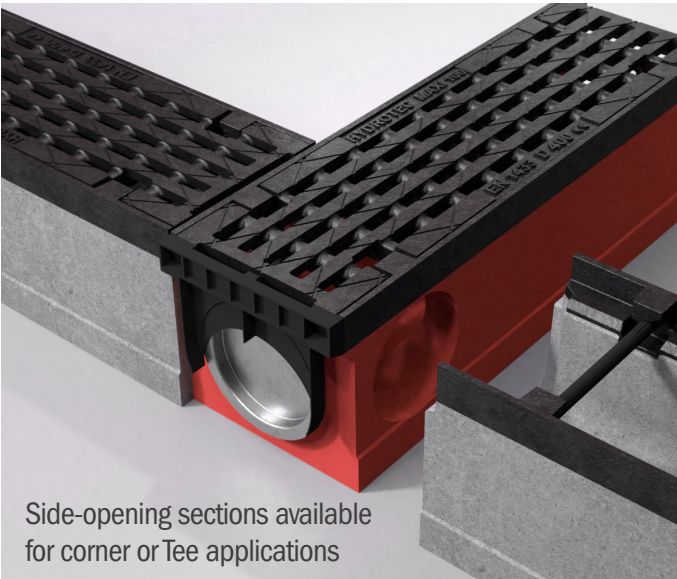
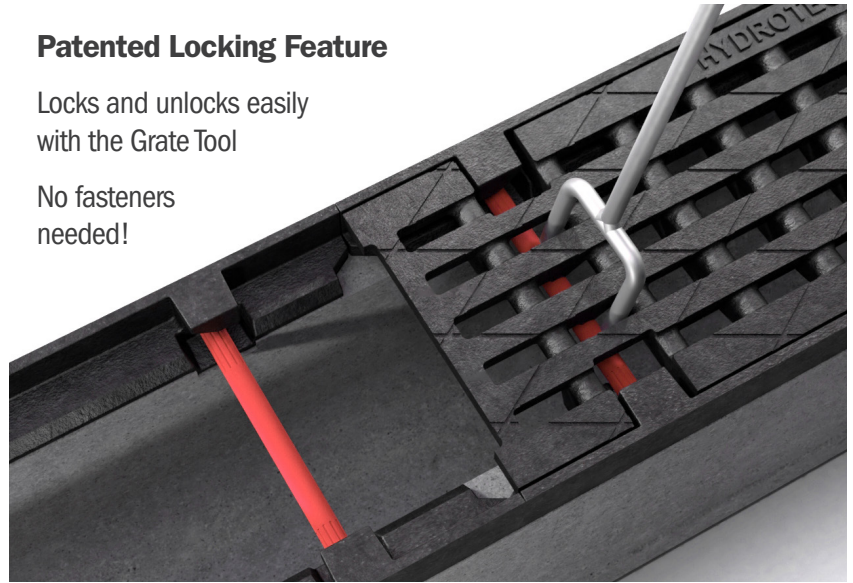
Integral ductile iron edge rails provide stability for all load classes



### Patented Locking Feature

Locks and unlocks easily with the Grate Tool

No fasteners needed!



Side-opening sections available for corner or Tee applications



Perfect for heavy loads — Parallel or perpendicular traffic

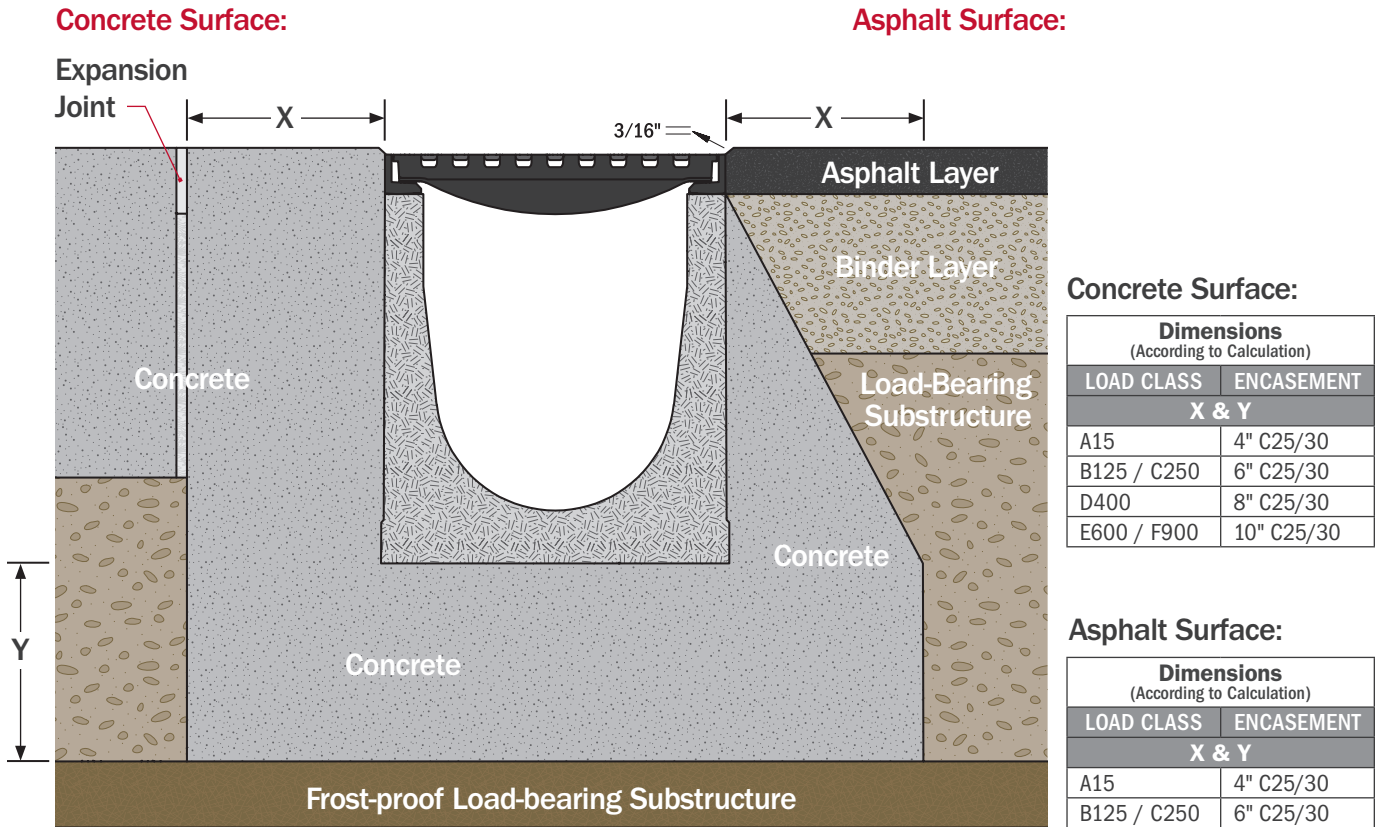
Anti-Shift points (8 per meter) prevent any longitudinal movement of grates, even under heavy vehicle braking forces



### Bottom Outlet

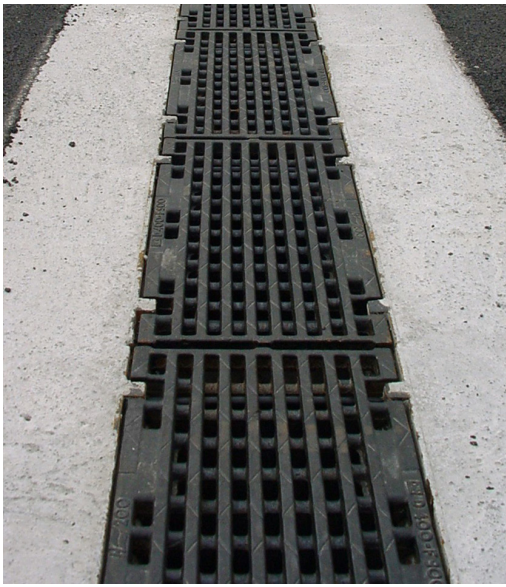
Use bottom outlet sections for easy, watertight connection to underground piping

# System Installation

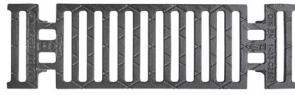


Installation diagram above is provided as a guideline only. Full installation instructions are available at [www.siouxchief.com](http://www.siouxchief.com)

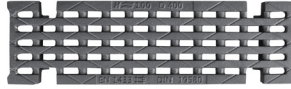




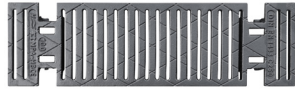
# Maxi 100



865-M4DICT



865-M4DIDL



865-M4DICH



865-M4LP00



865-M4CB

**Maxi 100 Channel Dimensions:** One-Meter = 39.4", Half-Meter = 19.7" | 4" nominal channel width | 6.25" top/outside width | 6.45" channel base width

## Buying Information

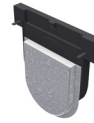
ITEM NO.	DESCRIPTION	MIN. QTY.	CASE QTY.
<b>MAXI 100 GRATES</b>			
865-M4DICT	Grate for Maxi 100 - Transverse-Slot - Ductile - Class C - Half-Meter	1	1
865-M4DICH	Grate for Maxi 100 - Transverse-Slot - Heel-Proof - Ductile - Class C - Half-Meter	1	1
865-M4DIDL	Grate for Maxi 100 - ADA Longitudinal-Slot - Ductile - Class D - Half-Meter	1	1
865-M4DIFL	Grate for Maxi 100 - ADA Longitudinal-Slot - Ductile - Class F - Half-Meter	1	1
<b>MAXI 100 CHANNELS - NEUTRAL</b>			
865-M4LP00	Maxi 100 One-Meter Neutral Low-Profile Channel - 3.15" Height	1	1
865-M4LP005	Maxi 100 Half-Meter Neutral Low-Profile Channel - 3.15" Height	1	1
865-M4LP00B	Maxi 100 One-Meter Neutral Low-Profile Channel with 4" Bottom Outlet - 3.15" Height	1	1
865-M4N00	Maxi 100 One-Meter Neutral Channel - 4.33" Height	1	1
865-M4N005	Maxi 100 Half-Meter Neutral Channel - 4.33" Height	1	1
865-M4N00B	Maxi 100 One-Meter Neutral Channel with 4" Bottom Outlet - 4.33" Height	1	1
865-M4N10	Maxi 100 One-Meter Neutral Channel - 6.30" Height	1	1
865-M4N105	Maxi 100 Half-Meter Neutral Channel - 6.30" Height	1	1
865-M4N105S	Maxi 100 Half-Meter Neutral Channel with 4" Side Opening - 6.30" Height	1	1
865-M4N10B	Maxi 100 One-Meter Neutral Channel with 4" Bottom Outlet - 6.30" Height	1	1
865-M4N15	Maxi 100 One-Meter Neutral Channel - 7.28" Height	1	1
865-M4N155	Maxi 100 Half-Meter Neutral Channel - 7.28" Height	1	1
865-M4N155S	Maxi 100 Half-Meter Neutral Channel with 4" Side Opening - 7.28" Height	1	1
865-M4N15B	Maxi 100 One-Meter Neutral Channel with 4" Bottom Outlet - 7.28" Height	1	1
865-M4N20	Maxi 100 One-Meter Neutral Channel 8.27" Height	1	1
865-M4N205	Maxi 100 Half-Meter Neutral Channel 8.27" Height	1	1
865-M4N205S	Maxi 100 Half-Meter Neutral Channel with 4" Side Opening - 8.27" Height	1	1
865-M4N20B	Maxi 100 One-Meter Neutral Channel with 4" Bottom Outlet - 8.27" Height	1	1
865-M4N25	Maxi 100 One-Meter Neutral Channel 9.25" Height	1	1
865-M4N255	Maxi 100 Half-Meter Neutral Channel 9.25" Height	1	1
865-M4N255S	Maxi 100 Half-Meter Neutral Channel with 4" Side Opening - 9.25" Height	1	1
865-M4N25B	Maxi 100 One-Meter Neutral Channel with 4" Bottom Outlet - 9.25" Height	1	1
865-M4N30	Maxi 100 One-Meter Neutral Channel - 10.2" Height	1	1
865-M4N305	Maxi 100 Half-Meter Neutral Channel - 10.2" Height	1	1
865-M4N305S	Maxi 100 Half-Meter Neutral Channel with 4" Side Opening - 10.2" Height	1	1
865-M4N30B	Maxi 100 One-Meter Neutral Channel with 4" Bottom Outlet - 10.2" Height	1	1
<b>MAXI 100 CATCH BASIN</b>			
865-M4CB	Maxi 100 Half-Meter Catch Basin with 6" (gasket) Side Outlet and Galvanized Debris Basket	1	1



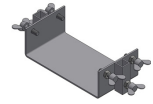
865-M4S09



865-TOOL



865-4EC

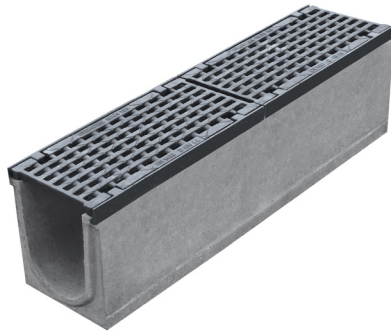


865-4BK

**» Buying Information**

ITEM NO.	DESCRIPTION	MIN. QTY.	CASE QTY.
<b>MAXI 100 CHANNELS - SLOPED (0.5%)</b>			
865-M4S01	Maxi 100 One-Meter Sloped #1 Channel	1	1
865-M4S02	Maxi 100 One-Meter Sloped #2 Channel	1	1
865-M4S03	Maxi 100 One-Meter Sloped #3 Channel	1	1
865-M4S04	Maxi 100 One-Meter Sloped #4 Channel	1	1
865-M4S05	Maxi 100 One-Meter Sloped #5 Channel	1	1
865-M4S06	Maxi 100 One-Meter Sloped #6 Channel	1	1
865-M4S07	Maxi 100 One-Meter Sloped #7 Channel	1	1
865-M4S08	Maxi 100 One-Meter Sloped #8 Channel	1	1
865-M4S09	Maxi 100 One-Meter Sloped #9 Channel	1	1
865-M4S10	Maxi 100 One-Meter Sloped #10 Channel	1	1
865-M4S11	Maxi 100 One-Meter Sloped #11 Channel	1	1
865-M4S12	Maxi 100 One-Meter Sloped #12 Channel	1	1
865-M4S13	Maxi 100 One-Meter Sloped #13 Channel	1	1
865-M4S14	Maxi 100 One-Meter Sloped #14 Channel	1	1
865-M4S15	Maxi 100 One-Meter Sloped #15 Channel	1	1
865-M4S16	Maxi 100 One-Meter Sloped #16 Channel	1	1
865-M4S17	Maxi 100 One-Meter Sloped #17 Channel	1	1
865-M4S18	Maxi 100 One-Meter Sloped #18 Channel	1	1
865-M4S19	Maxi 100 One-Meter Sloped #19 Channel	1	1
865-M4S20	Maxi 100 One-Meter Sloped #20 Channel	1	1
865-M4S21	Maxi 100 One-Meter Sloped #21 Channel	1	1
865-M4S22	Maxi 100 One-Meter Sloped #22 Channel	1	1
865-M4S23	Maxi 100 One-Meter Sloped #23 Channel	1	1
865-M4S24	Maxi 100 One-Meter Sloped #24 Channel	1	1
865-M4S25	Maxi 100 One-Meter Sloped #25 Channel	1	1
865-M4S26	Maxi 100 One-Meter Sloped #26 Channel	1	1
865-M4S27	Maxi 100 One-Meter Sloped #27 Channel	1	1
865-M4S28	Maxi 100 One-Meter Sloped #28 Channel	1	1
865-M4S29	Maxi 100 One-Meter Sloped #29 Channel	1	1
865-M4S30	Maxi 100 One-Meter Sloped #30 Channel	1	1
<b>MAXI 100 ACCESSORIES</b>			
865-4BK	Installation Bracket for Maxi 100 Channels	1	1
865-TOOL	Grate-Locking Tool	1	1
865-4LR	Grate-Locking Rod for Maxi 100 Channels	1	1
865-4LPEC3	Maxi 100 End Cap for 3.15" Channel	1	1
865-4LPEC4	Maxi 100 End Cap for 4.33" Channel	1	1
865-4EC	Maxi 100 End Cap - 2 Piece	1	1
865-4OC	Maxi 100 End Outlet - 2 Piece	1	1
865-4PC	PVC S&D Pipe Connection for 4" Outlets	1	1
865-4RS	Rubber Sleeve/Seal for 4" Bottom Outlets	1	1
865-SHOVEL	Cleaning Shovel for Maxi Channels	1	1

# Maxi 150



865-M6N00DA



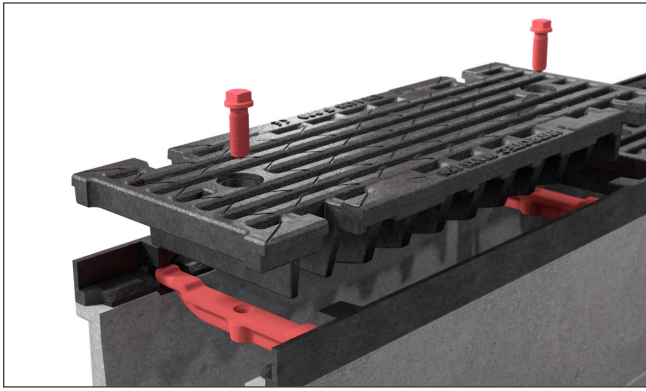
865-6UC

**Maxi 150 Channel Dimensions:** One-Meter = 39.4", Half-Meter = 19.7" | 6" nominal channel width | 8.19" top/outside width | 8.43" channel base width

## Buying Information

ITEM NO.	DESCRIPTION	MIN. QTY.	CASE QTY.
<b>MAXI 150 CHANNELS WITH DUCTILE IRON GRATE - CLASS D</b>			
865-M6N005DA	Maxi 150 Half-Meter Neutral Channel, 8.27" Height with Class D ADA Ductile Grate	1	1
865-M6N005SDA	Maxi 150 Half-Meter Neutral 6" Side-Opening Channel, 8.27" Height with Class D ADA Ductile Grate	1	1
865-M6N00BDA	Maxi 150 One-Meter Neutral 6" Bottom-Outlet Channel, 8.27" Height with Class D ADA Ductile Grate	1	1
865-M6N00DA	Maxi 150 One-Meter Neutral Channel, 8.27" Height with Class D ADA Ductile Grate	1	1
865-M6N055DA	Maxi 150 Half-Meter Neutral Channel, 10.23" Height with Class D ADA Ductile Grate	1	1
865-M6N055SDA	Maxi 150 Half-Meter Neutral 6" Side-Opening Channel, 10.23" Height with Class D ADA Ductile Grate	1	1
865-M6N05BDA	Maxi 150 One-Meter Neutral 6" Bottom-Outlet Channel, 10.23" Height with Class D ADA Ductile Grate	1	1
865-M6N05DA	Maxi 150 One-Meter Neutral Channel, 10.23" Height with Class D ADA Ductile Grate	1	1
865-M6N105DA	Maxi 150 Half-Meter Neutral Channel, 12.20" Height with Class D ADA Ductile Grate	1	1
865-M6N105SDA	Maxi 150 Half-Meter Neutral 6" Side-Opening Channel, 12.20" Height with Class D ADA Ductile Grate	1	1
865-M6N10BDA	Maxi 150 One-Meter Neutral 6" Bottom-Outlet Channel, 12.20" Height with Class D ADA Ductile Grate	1	1
865-M6N10DA	Maxi 150 One-Meter Neutral Channel, 12.20" Height with Class D ADA Ductile Grate	1	1
865-M6S01DA	Maxi 150 One-Meter Sloped #1 Channel with Class D ADA Ductile Grate	1	1
865-M6S02DA	Maxi 150 One-Meter Sloped #2 Channel with Class D ADA Ductile Grate	1	1
865-M6S03DA	Maxi 150 One-Meter Sloped #3 Channel with Class D ADA Ductile Grate	1	1
865-M6S04DA	Maxi 150 One-Meter Sloped #4 Channel with Class D ADA Ductile Grate	1	1
865-M6S05DA	Maxi 150 One-Meter Sloped #5 Channel with Class D ADA Ductile Grate	1	1
865-M6S06DA	Maxi 150 One-Meter Sloped #6 Channel with Class D ADA Ductile Grate	1	1
865-M6S07DA	Maxi 150 One-Meter Sloped #7 Channel with Class D ADA Ductile Grate	1	1
865-M6S08DA	Maxi 150 One-Meter Sloped #8 Channel with Class D ADA Ductile Grate	1	1
865-M6S09DA	Maxi 150 One-Meter Sloped #9 Channel with Class D ADA Ductile Grate	1	1
865-M6S10DA	Maxi 150 One-Meter Sloped #10 Channel with Class D ADA Ductile Grate	1	1
<b>MAXI 150 CATCH BASIN WITH DUCTILE IRON GRATE - CLASS D</b>			
865-M6CBDA	Maxi 150 Half-Meter Catch Basin with 6" (gasket) Side Outlet, Galvanized Debris Basket and Class D ADA Ductile Grate	1	1
<b>MAXI 150 ACCESSORIES</b>			
865-TOOL	Grate-Locking Tool	1	1
865-6LR	Grate-Locking Rod for Maxi 150 Channels	1	1
865-6PC	PVC S&D Pipe Connection for 6" Outlets	1	1
865-6PCE	6" Oval PVC Pipe Connection	1	1
865-6RS	Rubber Sleeve/Seal for 6" Bottom Outlets	1	1
865-6UC	Maxi 150 Universal End Cap/Outlet	1	1
865-SHOVEL	Cleaning Shovel for Maxi Channels	1	1





865-M6N00FA

### The 'F1' Locking Feature

For applications that require a higher level of security for Class F grates, the F1 option uses iron cross bars and hex fasteners to keep grates securely in place.

» Buying Information			
ITEM NO.	DESCRIPTION	MIN. QTY.	CASE QTY.
<b>MAXI 150 CHANNELS WITH DUCTILE IRON GRATE - CLASS F</b>			
865-M6N005FA	Maxi 150 Half-Meter Neutral Channel, 8.27" Height with Class F ADA Ductile Grate	1	1
865-M6N005SFA	Maxi 150 Half-Meter Neutral 6" Side-Opening Channel, 8.27" Height with Class F ADA Ductile Grate	1	1
865-M6N00BFA	Maxi 150 One-Meter Neutral 6" Bottom-Outlet Channel, 8.27" Height with Class F ADA Ductile Grate	1	1
865-M6N00FA	Maxi 150 One-Meter Neutral Channel, 8.27" Height with Class F ADA Ductile Grate	1	1
865-M6N055FA	Maxi 150 Half-Meter Neutral Channel, 10.23" Height with Class F ADA Ductile Grate	1	1
865-M6N055SFA	Maxi 150 Half-Meter Neutral 6" Side-Opening Channel, 10.23" Height with Class F ADA Ductile Grate	1	1
865-M6N05BFA	Maxi 150 One-Meter Neutral 6" Bottom-Outlet Channel, 10.23" Height with Class F ADA Ductile Grate	1	1
865-M6N05FA	Maxi 150 One-Meter Neutral Channel, 10.23" Height with Class F ADA Ductile Grate	1	1
865-M6N105FA	Maxi 150 Half-Meter Neutral Channel, 12.20" Height with Class F ADA Ductile Grate	1	1
865-M6N105SFA	Maxi 150 Half-Meter Neutral 6" Side-Opening Channel, 12.20" Height with Class F ADA Ductile Grate	1	1
865-M6N10BFA	Maxi 150 One-Meter Neutral 6" Bottom-Outlet Channel, 12.20" Height with Class F ADA Ductile Grate	1	1
865-M6N10FA	Maxi 150 One-Meter Neutral Channel, 12.20" Height with Class F ADA Ductile Grate	1	1
865-M6S01FA	Maxi 150 One-Meter Sloped #1 with Class F ADA Ductile Grate	1	1
865-M6S02FA	Maxi 150 One-Meter Sloped #2 with Class F ADA Ductile Grate	1	1
865-M6S03FA	Maxi 150 One-Meter Sloped #3 with Class F ADA Ductile Grate	1	1
865-M6S04FA	Maxi 150 One-Meter Sloped #4 with Class F ADA Ductile Grate	1	1
865-M6S05FA	Maxi 150 One-Meter Sloped #5 with Class F ADA Ductile Grate	1	1
865-M6S06FA	Maxi 150 One-Meter Sloped #6 with Class F ADA Ductile Grate	1	1
865-M6S07FA	Maxi 150 One-Meter Sloped #7 with Class F ADA Ductile Grate	1	1
865-M6S08FA	Maxi 150 One-Meter Sloped #8 with Class F ADA Ductile Grate	1	1
865-M6S09FA	Maxi 150 One-Meter Sloped #9 with Class F ADA Ductile Grate	1	1
865-M6S10FA	Maxi 150 One-Meter Sloped #10 with Class F ADA Ductile Grate	1	1
<b>MAXI 150 CATCH BASIN WITH DUCTILE IRON GRATE - CLASS F</b>			
865-M6CBFA	Maxi 150 Half-Meter Catch Basin with 6" (gasket) Side Outlet, Galvanized Debris Basket and Class F ADA Ductile Grate	1	1
<b>MAXI 150 CHANNELS WITH DUCTILE IRON GRATE - CLASS F - 'F1' LOCKING FEATURE</b>			
865-M6N005F1A	Maxi 150 Half-Meter Neutral Channel, 8.27" Height with F1 Class F ADA Ductile Grate	1	1
865-M6N005SF1A	Maxi 150 Half-Meter Neutral 6" Side-Opening Channel, 8.27" Height with F1 Class F ADA Ductile Grate	1	1
865-M6N00BF1A	Maxi 150 One-Meter Neutral 6" Bottom-Outlet Channel, 8.27" Height with F1 Class F ADA Ductile Grate	1	1
865-M6N00F1A	Maxi 150 One-Meter Neutral Channel, 8.27" Height with F1 Class F ADA Ductile Grate	1	1
<b>MAXI 150 CATCH BASIN WITH DUCTILE IRON GRATE - CLASS F - 'F1' LOCKING FEATURE</b>			
865-M6CBF1A	Maxi 150 Half-Meter Catch Basin with 6" (gasket) Side Outlet, Galvanized Debris Basket and F1 Class F ADA Ductile Grate	1	1

# Maxi 200



865-M8N00DA



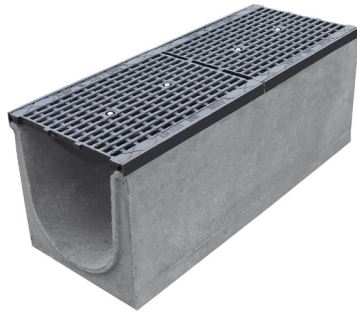
865-8UC

**Maxi 200 Channel Dimensions:** One-Meter = 39.4", Half-Meter = 19.7" | 8" nominal channel width | 10.16" top/outside width | 10.39" channel base width

## Buying Information

ITEM NO.	DESCRIPTION	MIN. QTY.	CASE QTY.
<b>MAXI 200 CHANNELS WITH DUCTILE IRON GRATE - CLASS D</b>			
865-M8N005DA	Maxi 200 Half-Meter Neutral Channel, 12.20" Height with Class D ADA Ductile Grate	1	1
865-M8N005SDA	Maxi 200 Half-Meter Neutral 6" Side-Opening Channel, 12.20" Height with Class D ADA Ductile Grate	1	1
865-M8N00BDA	Maxi 200 One-Meter Neutral 6" Bottom-Outlet Channel, 12.20" Height with Class D ADA Ductile Grate	1	1
865-M8N00DA	Maxi 200 One-Meter Neutral Channel, 12.20" Height with Class D ADA Ductile Grate	1	1
<b>MAXI 200 CATCH BASIN WITH DUCTILE IRON GRATE - CLASS D</b>			
865-M8CBDA	Maxi 200 Half-Meter Catch Basin with 6" (gasket) Side Outlet, Galvanized Debris Basket and Class D ADA Ductile Grate	1	1
<b>MAXI 200 CHANNELS WITH DUCTILE IRON GRATE - CLASS F</b>			
865-M8N005FA	Maxi 200 Half-Meter Neutral Channel, 12.20" Height with Class F ADA Ductile Grate	1	1
865-M8N005SFA	Maxi 200 Half-Meter Neutral 6" Side-Opening Channel, 12.20" Height with Class F ADA Ductile Grate	1	1
865-M8N00BFA	Maxi 200 One-Meter Neutral 6" Bottom-Outlet Channel, 12.20" Height with Class F ADA Ductile Grate	1	1
865-M8N00FA	Maxi 200 One-Meter Neutral Channel, 12.20" Height with Class F ADA Ductile Grate	1	1
<b>MAXI 200 CATCH BASIN WITH DUCTILE IRON GRATE - CLASS F</b>			
865-M8CBFA	Maxi 200 Half-Meter Catch Basin with 6" (gasket) Side Outlet, Galvanized Debris Basket and Class F ADA Ductile Grate	1	1
<b>MAXI 200 CHANNELS WITH DUCTILE IRON GRATE - CLASS F - 'F1' LOCKING FEATURE</b>			
865-M8N005F1A	Maxi 200 Half-Meter Neutral Channel, 12.20" Height with F1 Class F ADA Ductile Grate	1	1
865-M8N005SF1A	Maxi 200 Half-Meter Neutral 6" Side-Opening Channel, 12.20" Height with F1 Class F ADA Ductile Grate	1	1
865-M8N00BF1A	Maxi 200 One-Meter Neutral 6" Bottom-Outlet Channel, 12.20" Height with F1 Class F ADA Ductile Grate	1	1
865-M8N00F1A	Maxi 200 One-Meter Neutral Channel, 12.20" Height with F1 Class F ADA Ductile Grate	1	1
<b>MAXI 200 CATCH BASIN WITH DUCTILE IRON GRATE - CLASS F - 'F1' LOCKING FEATURE</b>			
865-M8CBF1A	Maxi 200 Half-Meter Catch Basin with 6" (gasket) Side Outlet, Galvanized Debris Basket and F1 Class F ADA Ductile Grate	1	1
<b>MAXI 200 ACCESSORIES</b>			
865-TOOL	Grate-Locking Tool	1	1
865-8LR	Grate-Locking Rod for Maxi 200 Channels	1	1
865-6PC	PVC S&D Pipe Connection for 6" Outlets	1	1
865-6RS	Rubber Sleeve/Seal for 6" Bottom Outlets	1	1
865-8UC	Maxi 200 Universal End Cap/Outlet	1	1
865-SHOVEL	Cleaning Shovel for Maxi Channels	1	1

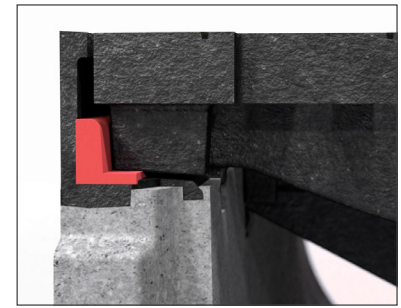
# Maxi 300 & 400



865-M12PN00EA



865-M16PN00EA



## Polymer Grate Inserts

Maxi 300 & 400 systems feature an integral, poly insert to reduce noise and wear on the castings

**Maxi 300 Channel Dimensions:** One-Meter = 39.4", Half-Meter = 19.7" | 12" nominal channel width | 14.88" top/outside width | 15.12" channel base width  
**Maxi 400 Channel Dimensions:** One-Meter = 39.4", Half-Meter = 19.7" | 16" nominal channel width | 18.90" top/outside width | 19.21" channel base width

### Buying Information

ITEM NO.	DESCRIPTION	MIN. QTY.	CASE QTY.
<b>MAXI 300 CHANNELS WITH DUCTILE IRON GRATE - CLASS E - 'F1' LOCKING FEATURE</b>			
865-M12PN005EA	Maxi 300 Half-Meter Neutral Channel, 15.75" Height with F1 Class E ADA Ductile Grate	1	1
865-M12PN00BEA	Maxi 300 One-Meter Neutral 8" Bottom-Outlet Channel, 15.75" Height with F1 Class E ADA Ductile Grate	1	1
865-M12PN00EA	Maxi 300 One-Meter Neutral Channel, 15.75" Height with F1 Class E ADA Ductile Grate	1	1
<b>MAXI 300 CATCH BASIN WITH DUCTILE IRON GRATE - CLASS E - 'F1' LOCKING FEATURE</b>			
865-M12PCBEA	Maxi 300 Half-Meter Catch Basin with 8" (gasket) Side Outlet, Galvanized Debris Basket and F1 Class E ADA Ductile Grate	1	1
<b>MAXI 300 CHANNELS WITH DUCTILE IRON GRATE - CLASS F - 'F1' LOCKING FEATURE</b>			
865-M12PN005FA	Maxi 300 Half-Meter Neutral Channel, 15.75" Height with F1 Class F ADA Ductile Grate	1	1
865-M12PN00BFA	Maxi 300 One-Meter Neutral 8" Bottom-Outlet Channel, 15.75" Height with F1 Class F ADA Ductile Grate	1	1
865-M12PN00FA	Maxi 300 One-Meter Neutral Channel, 15.75" Height with F1 Class F ADA Ductile Grate	1	1
<b>MAXI 300 CATCH BASIN WITH DUCTILE IRON GRATE - CLASS F - 'F1' LOCKING FEATURE</b>			
865-M12PCBFA	Maxi 300 Half-Meter Catch Basin with 8" (gasket) Side Outlet, Galvanized Debris Basket and F1 Class F ADA Ductile Grate	1	1
<b>MAXI 400 CHANNELS WITH DUCTILE IRON GRATE - CLASS E - 'F1' LOCKING FEATURE</b>			
865-M16PN005EA	Maxi 400 Half-Meter Neutral Channel, 15.75" Height with F1 Class E ADA Ductile Grate	1	1
865-M16PN00BEA	Maxi 400 One-Meter Neutral 8" Bottom-Outlet Channel, 15.75" Height with F1 Class E ADA Ductile Grate	1	1
865-M16PN00EA	Maxi 400 One-Meter Neutral Channel, 15.75" Height with F1 Class E ADA Ductile Grate	1	1
<b>MAXI 400 CATCH BASIN WITH DUCTILE IRON GRATE - CLASS E - 'F1' LOCKING FEATURE</b>			
865-M16PCBEA	Maxi 400 Half-Meter Catch Basin with 8" (gasket) Side Outlet, Galvanized Debris Basket and F1 Class E ADA Ductile Grate	1	1
<b>MAXI 400 CHANNELS WITH DUCTILE IRON GRATE - CLASS F - 'F1' LOCKING FEATURE</b>			
865-M16PN005FA	Maxi 400 Half-Meter Neutral Channel, 15.75" Height with F1 Class F ADA Ductile Grate	1	1
865-M16PN00BFA	Maxi 400 One-Meter Neutral 8" Bottom-Outlet Channel, 15.75" Height with F1 Class F ADA Ductile Grate	1	1
865-M16PN00FA	Maxi 400 One-Meter Neutral Channel, 15.75" Height with F1 Class F ADA Ductile Grate	1	1
<b>MAXI 400 CATCH BASIN WITH DUCTILE IRON GRATE - CLASS F - 'F1' LOCKING FEATURE</b>			
865-M16PCBFA	Maxi 400 Half-Meter Catch Basin with 8" (gasket) Side Outlet, Galvanized Debris Basket and F1 Class F ADA Ductile Grate	1	1
<b>MAXI 300/400 ACCESSORIES</b>			
865-12ECD	Maxi 300 End Cap - Iron	1	1
865-12OCD	Maxi 300 End Outlet - Iron	1	1
865-16ECD	Maxi 400 End Cap - Iron	1	1
865-16OCD	Maxi 400 End Outlet - Iron	1	1
865-8PC	PVC S&D Pipe Connection for 8" Outlets	1	1
865-8RS	Rubber Sleeve/Seal for 8" Bottom Outlets	1	1

# We're Here to Help!

Consider Sioux Chief your *Total Trench Drain Source*

## Support Materials:

- Spec Sheets
- BIM/Revit files
- Job sketches / Design layouts
- Shop drawings
- Submittal packages

## Technical Services:

- System selection and optimization
- Hydraulic calculations
- Installation/application guidance

# TAKE THE FIELD.

Email us at:

[Specifications@SiouxChief.com](mailto:Specifications@SiouxChief.com)



[www.siouxchief.com](http://www.siouxchief.com)

#LT2-MAXI

14940 Thunderbird Road  
Kansas City, MO 64147

P 1.800.821.3944

F 1.800.758.5950

