

# HydroBlock™

## »» Ductile Iron Trench Drain System

### Unique Design

One-piece, ductile iron design for ultimate durability  
Applications up to Load Class F900

Installs easily with no fasteners needed.  
Joints are water-tight and anti-torque

### Reusable & Recyclable

The HydroBlock system can be re-used and re-installed as needed  
Ductile iron material is completely recyclable

### Rattle-Free

One-piece grate and channel means no loose parts to rattle  
Perfect for heavy loads and high-traffic areas



Supply

Drainage

Support

Specialties

[www.siouxchief.com](http://www.siouxchief.com)

TAKE THE FIELD.





## System Features

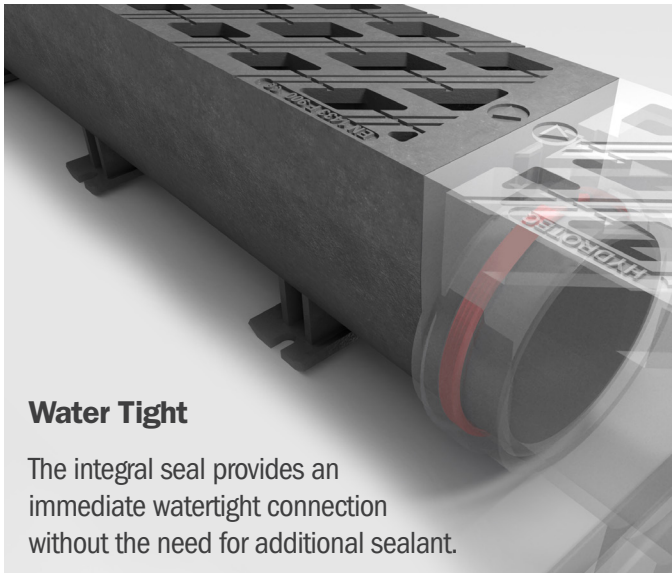


The spigot end allows easy connection to outlet piping

### Certified TYPE I

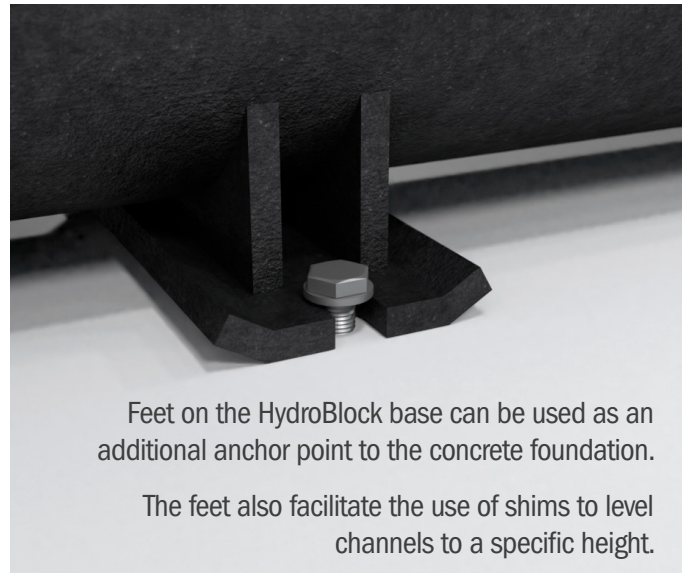
Withstands horizontal forces without the need for concrete encasement.

Only a load-bearing concrete foundation is required.



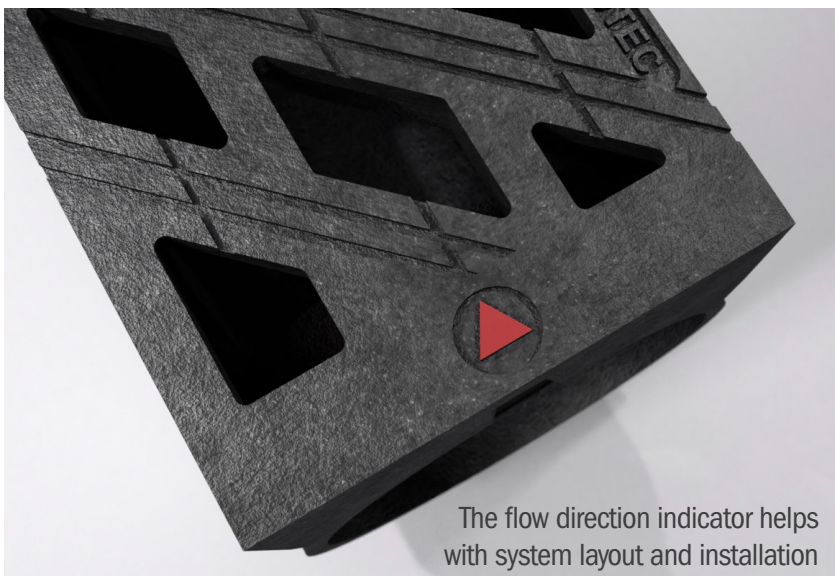
### Water Tight

The integral seal provides an immediate watertight connection without the need for additional sealant.



Feet on the HydroBlock base can be used as an additional anchor point to the concrete foundation.

The feet also facilitate the use of shims to level channels to a specific height.



The flow direction indicator helps with system layout and installation

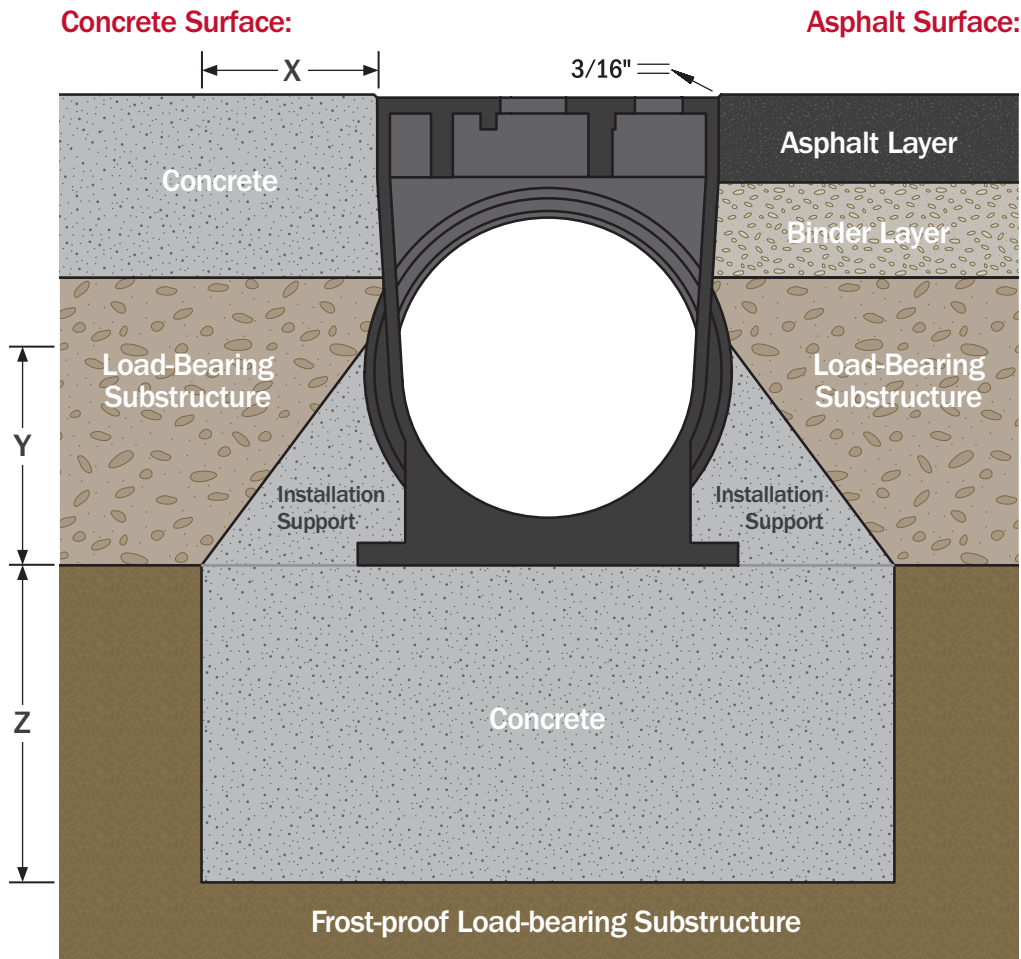


### Quiet

No Grate-Rattle.

Perfect for heavy loads — Parallel or perpendicular traffic

# System Installation



**Note:**

- Pavers and asphalt can be laid right up to the channel edge – No need for concrete encasement that would disturb the surface aesthetic
- Available with standard and ADA-Compliant grates. Standard Openings: 0.87" ADA openings: 0.47".

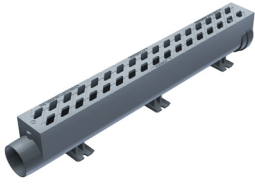
Dimensions (According to Calculation)	
LOAD CLASS	ENCASEMENT
<b>X &amp; Y</b>	
D400	6" C25/30
E600 / F900	8" C25/30
<b>Z</b>	
D400	8" C25/30
E600 / F900	10" C25/30

Installation instructions above are provided as a guideline only. Full installation instructions are available at [www.siouxchief.com](http://www.siouxchief.com)

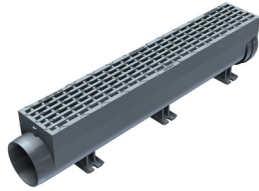




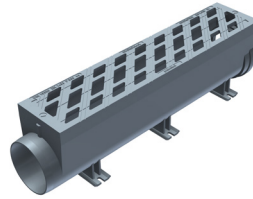
# Channel Sections



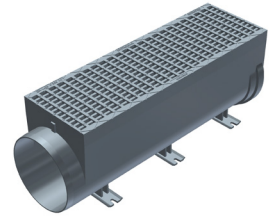
865-HB400FA



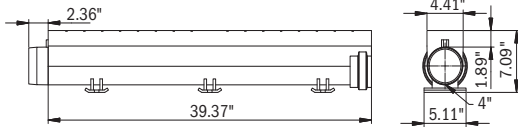
865-HB6ADA00FA



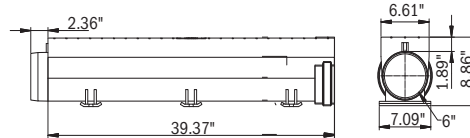
865-HB800FA



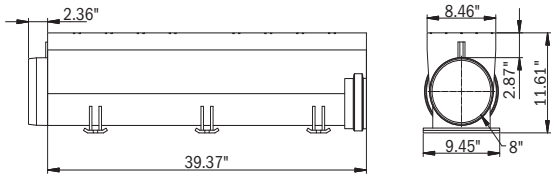
865-HB12ADA00FA



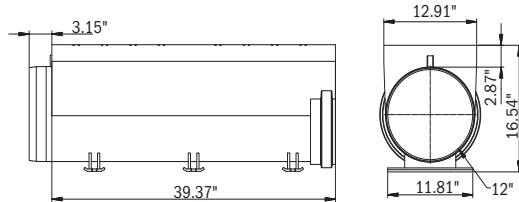
**HydroBlock 100**  
Grate Free-Area: 52 in<sup>2</sup>/m



**HydroBlock 150**  
Grate Free-Area: Std = 80 in<sup>2</sup>/m | ADA = 59 in<sup>2</sup>/m



**HydroBlock 200**  
Grate Free-Area: Std = 120 in<sup>2</sup>/m | ADA = 87 in<sup>2</sup>/m

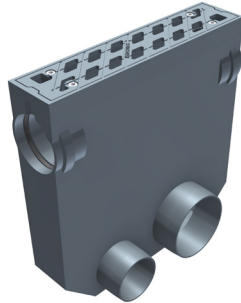


**HydroBlock 300**  
Grate Free-Area: Std = 184 in<sup>2</sup>/m | ADA = 130 in<sup>2</sup>/m

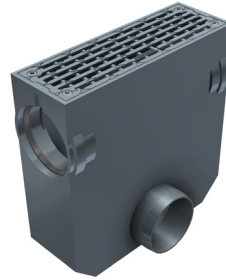
## Buying Information

ITEM NO.	DESCRIPTION	WEIGHT LBS.	MIN. QTY.	CASE QTY.
<b>HYDROBLOCK™ CHANNEL SECTIONS</b>				
865-HB400FA	HydroBlock 100 - 4" One-Meter Neutral Ductile Iron Channel/Grate	67.2	1	1
865-HB600FA	HydroBlock 150 - 6" One-Meter Neutral Ductile Iron Channel/Grate	110.9	1	1
865-HB6ADA00FA	HydroBlock 150 - 6" One-Meter Neutral Ductile Iron Channel/Grate - ADA Compliant	116.8	1	1
865-HB800FA	HydroBlock 200 - 8" One-Meter Neutral Ductile Iron Channel/Grate	145.7	1	1
865-HB8ADA00FA	HydroBlock 200 - 8" One-Meter Neutral Ductile Iron Channel/Grate - ADA Compliant	157.4	1	1
865-HB1200FA	HydroBlock 300 - 12" One-Meter Neutral Ductile Iron Channel/Grate	242.5	1	1
865-HB12ADA00FA	HydroBlock 300 - 12" One-Meter Neutral Ductile Iron Channel/Grate - ADA Compliant	246.9	1	1

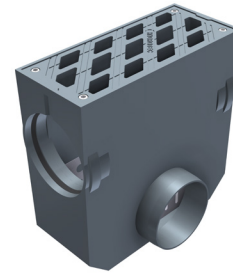
# » Catch Basins



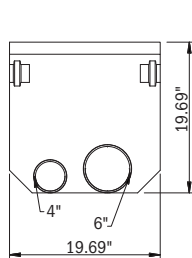
865-HB4CBFA



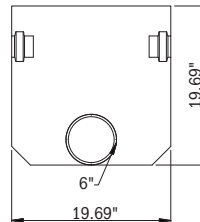
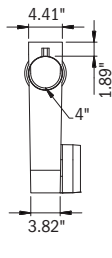
865-HB6ADACBFA



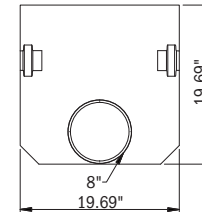
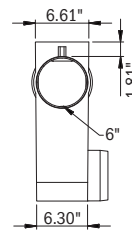
865-HB8CBFA



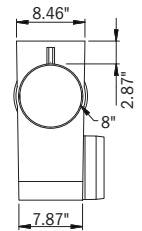
**HydroBlock™ 100**  
Grate Free-Area: 26 in<sup>2</sup>



**HydroBlock™ 150**  
Grate Free-Area: Std = 40 in<sup>2</sup> | ADA = 29 in<sup>2</sup>



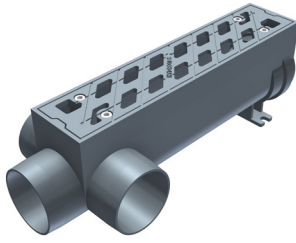
**HydroBlock™ 200**  
Grate Free-Area: Std = 60 in<sup>2</sup> | ADA = 43 in<sup>2</sup>



## » Buying Information

ITEM NO.	DESCRIPTION	WEIGHT LBS.	MIN. QTY.	CASE QTY.
<b>HYDROBLOCK™ CATCH BASINS</b>				
865-HB4CBFA	HydroBlock 100 - Ductile Iron Catch Basin with Removable Grate	83.8	1	1
865-HB6CBFA	HydroBlock 150 - Ductile Iron Catch Basin with Removable Grate	121.3	1	1
865-HB6ADACBFA	HydroBlock 150 - Ductile Iron Catch Basin with Removable Grate - ADA Compliant	119.0	1	1
865-HB8CBFA	HydroBlock 200 - Ductile Iron Catch Basin with Removable Grate	136.7	1	1
865-HB8ADACBFA	HydroBlock 200 - Ductile Iron Catch Basin with Removable Grate - ADA Compliant	140.2	1	1

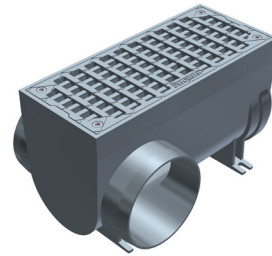
# Outlet Sections



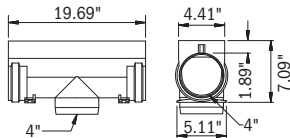
865-HB4005HSFA



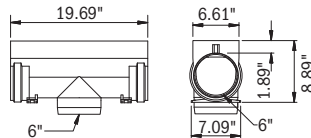
865-HB6ADA005BFA



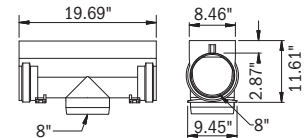
865-HB8ADA005SFA



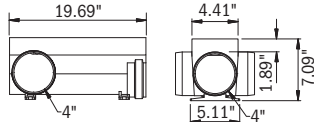
HydroBlock 100 - Bottom Outlet Section  
Grate Free-Area: 26 in<sup>2</sup>



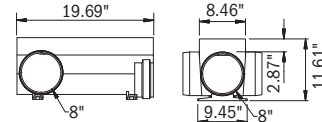
HydroBlock 150 - Bottom Outlet Section  
Grate Free-Area: Std = 40 in<sup>2</sup> | ADA = 29 in<sup>2</sup>



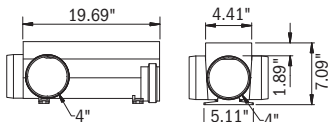
HydroBlock 200 - Bottom Outlet Section  
Grate Free-Area: Std = 60 in<sup>2</sup> | ADA = 43 in<sup>2</sup>



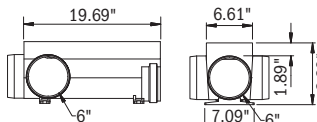
HydroBlock 100 - Left & Right Side Outlet Section  
Grate Free-Area: 26 in<sup>2</sup>



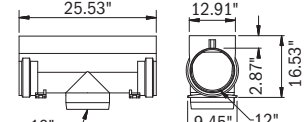
HydroBlock 200 - Left & Right Side Outlet Section  
Grate Free-Area: Std = 60 in<sup>2</sup> | ADA = 43 in<sup>2</sup>



HydroBlock 100 - Left, Right & End Outlet Section  
Grate Free-Area: 26 in<sup>2</sup>



HydroBlock 150 - Left, Right & End Outlet Section  
Grate Free-Area: Std = 40 in<sup>2</sup> | ADA = 29 in<sup>2</sup>



HydroBlock 300 - Bottom Outlet Section  
Grate Free-Area: Std = 92 in<sup>2</sup> | ADA = 65 in<sup>2</sup>

## Buying Information

ITEM NO.	DESCRIPTION	WEIGHT LBS.	MIN. QTY.	CASE QTY.
<b>BOTTOM OUTLET WITH REMOVABLE GRATE - DUCTILE IRON</b>				
865-HB4005BFA	HydroBlock 100 - 4" Half-Meter Neutral Outlet Section	37.5	1	1
865-HB6005BFA	HydroBlock 150 - 6" Half-Meter Neutral Outlet Section	68.3	1	1
865-HB6ADA005BFA	HydroBlock 150 - 6" Half-Meter Neutral Outlet Section - ADA Compliant	68.3	1	1
865-HB8005BFA	HydroBlock 200 - 8" Half-Meter Neutral Outlet Section	97.0	1	1
865-HB8ADA005BFA	HydroBlock 200 - 8" Half-Meter Neutral Outlet Section - ADA Compliant	157.4	1	1
865-HB12005BFA	HydroBlock 300 - 12" Half-Meter Neutral Outlet Section	231.5	1	1
865-HB12ADA005BFA	HydroBlock 300 - 12" Half-Meter Neutral Outlet Section - ADA Compliant	211.6	1	1
<b>LEFT &amp; RIGHT SIDE OUTLET WITH REMOVABLE GRATE - DUCTILE IRON</b>				
865-HB4005SFA	HydroBlock 100 - 4" Half-Meter Neutral Outlet Section	37.5	1	1
865-HB8005SFA	HydroBlock 200 - 8" Half-Meter Neutral Outlet Section	99.2	1	1
865-HB8ADA005SFA	HydroBlock 200 - 8" Half-Meter Neutral Outlet Section - ADA Compliant	99.2	1	1
<b>LEFT, RIGHT &amp; END OUTLET WITH REMOVABLE GRATE - DUCTILE IRON</b>				
865-HB4005HSFA	HydroBlock 100 - 4" Half-Meter Neutral Outlet Section	37.5	1	1
865-HB6005HSFA	HydroBlock 150 - 6" Half-Meter Neutral Outlet Section	70.5	1	1
865-HB6ADA005HSFA	HydroBlock 150 - 6" Half-Meter Neutral Outlet Section - ADA Compliant	70.5	1	1

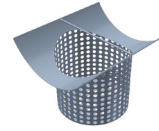
# Accessories



865-HB6EC



865-HB60C



865-HB12S

## Buying Information

ITEM NO.	DESCRIPTION	MIN. QTY.	CASE QTY.
<b>HYDROBLOCK™ ACCESSORIES</b>			
865-HB4EC	HydroBlock 100 - Closed End PLUG for SOCKET end	1	1
865-HB40C	HydroBlock 100 - Closed End CAP for SPIGOT end	1	1
865-HB6EC	HydroBlock 150 - Closed End PLUG for SOCKET end	1	1
865-HB60C	HydroBlock 150 - Closed End CAP for SPIGOT end	1	1
865-HB8EC	HydroBlock 200 - Closed End PLUG for SOCKET end	1	1
865-HB80C	HydroBlock 200 - Closed End CAP for SPIGOT end	1	1
865-HB12EC	HydroBlock 300 - Closed End PLUG for SOCKET end	1	1
865-HB120C	HydroBlock 300 - Closed End CAP for SPIGOT end	1	1
865-HB12S	HydroBlock 300 - Debris Bucket for vertical outlet	1	1
865-HB4INSB	Installation aid tool for HydroBlock 100	1	1
865-HB6INSB	Installation aid tool for HydroBlock 150/200/300	1	1

## We're Here to Help!

Consider Sioux Chief your *Total Trench Drain Source*

### Technical Services:

- System selection and optimization
- Installation/application guidance
- Hydraulic calculations

### Support Materials:

- Job sketches / Design layouts
- Submittal packages
- BIM/Revit files
- Shop drawings
- Spec Sheets

# TAKE THE FIELD.

Email us at:  
[Specifications@SiouxChief.com](mailto:Specifications@SiouxChief.com)



[www.siouxchief.com](http://www.siouxchief.com)

14940 Thunderbird Road  
Kansas City, MO 64147  
**P** 1.800.821.3944  
**F** 1.800.758.5950

